



AiP74LVC377

Octal D Type Flip-Flop with Data Enable; Positive-Edge Trigger

Product Specification

Specification Revision History:

Version	Date	Description
2023-11-A0	2023-11	New
2024-04-A1	2024-04	Modify the parameters



Contents

1、 General Description.....	1
2、 Block Diagram And Pin Description	3
2.1、 Block Diagram	3
2.2、 Pin Configurations.....	4
2.3、 Pin Description.....	5
2.4、 Function Table.....	5
3、 Electrical Parameter	6
3.1、 Absolute Maximum Ratings.....	6
3.2、 Recommended Operating Conditions.....	6
3.3、 Electrical Characteristics	6
3.3.1、 DC Characteristics 1	6
3.3.2、 DC Characteristics 2	7
3.3.3、 AC Characteristics 1	8
3.3.4、 AC Characteristics 2	9
4、 Testing Circuit	10
4.1、 AC Testing Circuit	10
4.2、 Test Data	10
4.3、 AC Testing Waveforms.....	11
4.4、 Measurement Points	12
5、 Package Information	13
5.1、 SOP20	13
5.2、 TSSOP20.....	14
5.3、 DHVQFN20	15
6、 Statements And Notes	16
6.1、 The name and content of Hazardous substances or Elements in the product	16
6.2、 Notes	16



1、General Description

The AiP74LVC377 has eight edge-triggered D-type flip-flops with individual inputs (D) and outputs (Q). The input can be driven from either 3.3V or 5V devices. This feature allows the use of this device in a mixed 3.3V and 5V environment.

Features:

- Supply voltage range: 1.2V to 3.6V
- Inputs accept voltages up to 5.5V
- $\pm 24\text{mA}$ output drive at 3.0V
- High-impedance when $V_{CC}=0\text{V}$
- Temperature range: -40°C to $+125^{\circ}\text{C}$
- Packaging information: SOP20/TSSOP20/DHVQFN20



Ordering Information:

Tube packing specifications:

Part number	Packaging form	Marking code	Tube quantity	Boxed tube quantity	Boxed quantity	Notes
AiP74LVC377SA20.TB	SOP20	74LVC377	35 PCS/tube	80 tube/box	2800 PCS/box	Dimensions of plastic enclosure: 12.8mm×7.5mm Pin spacing: 1.27mm
AiP74LVC377TA20.TB	TSSOP20	74LVC377	70 PCS/tube	200 tube/box	14000 PCS/box	Dimensions of plastic enclosure: 6.5mm×4.4mm Pin spacing: 0.65mm

Reel packing specifications:

Part number	Packaging form	Marking code	Reel quantity	Boxed reel quantity	Notes
AiP74LVC377SA20.TR	SOP20	74LVC377	2000 PCS/reel	2000 PCS/box	Dimensions of plastic enclosure: 12.8mm×7.5mm Pin spacing: 1.27mm
AiP74LVC377TA20.TR	TSSOP20	74LVC377	4000 PCS/reel	8000 PCS/box	Dimensions of plastic enclosure: 6.5mm×4.4mm Pin spacing: 0.65mm
AiP74LVC377QE20.TR	DHVQFN20	74LVC377	3000 PCS/reel	3000 PCS/box	Dimensions of plastic enclosure: 4.5mm×2.5mm Pin spacing: 0.5mm

Note: If the physical information is inconsistent with the ordering information, please refer to the actual product.



2、Block Diagram And Pin Description

2.1、Block Diagram

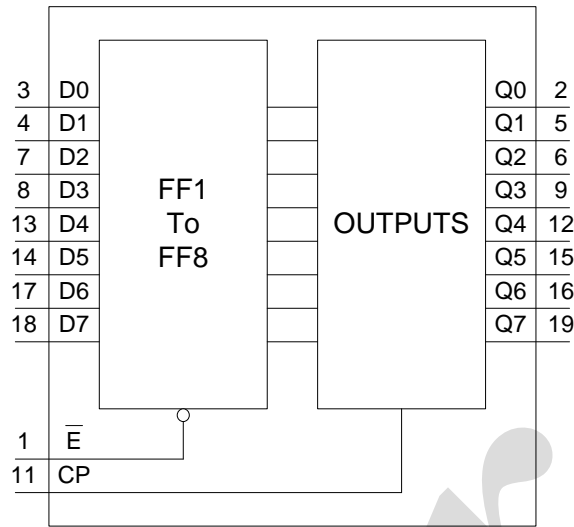


Figure 1. Functional diagram

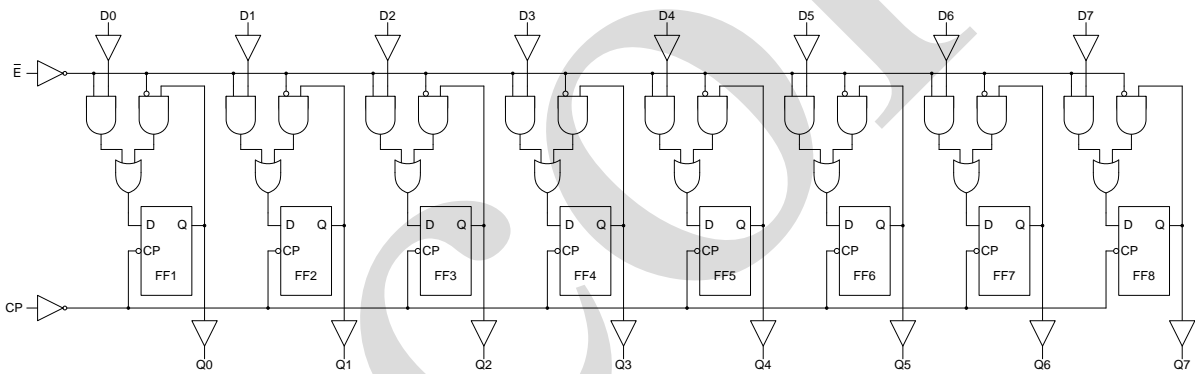
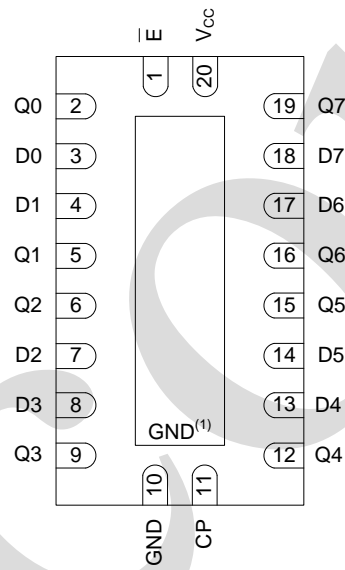
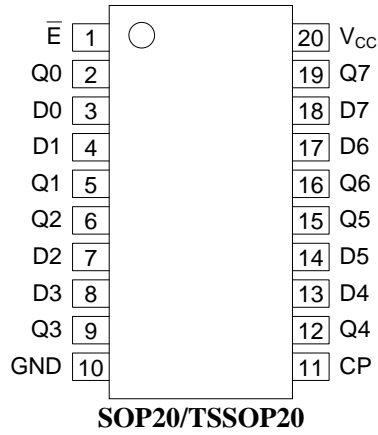


Figure 2. Logic diagram



2.2、Pin Configurations



Note: (1) This is not a supply pin. The substrate is attached to this pad using conductive die attach material. There is no electrical or mechanical requirement to solder this pad. However, if it is soldered, the solder land should remain floating or be connected to GND.



2.3、Pin Description

Pin No.	Pin Name	Description
1	\bar{E}	data enable input (active LOW)
2	Q0	data output
3	D0	data input
4	D1	data input
5	Q1	data output
6	Q2	data output
7	D2	data input
8	D3	data input
9	Q3	data output
10	GND	ground (0V)
11	CP	clock input (LOW-to-HIGH, edge triggered)
12	Q4	data output
13	D4	data input
14	D5	data input
15	Q5	data output
16	Q6	data output
17	D6	data input
18	D7	data input
19	Q7	data output
20	V _{CC}	supply voltage

2.4、Function Table

Operating modes	Control		Input	Output
	CP	\bar{E}	D _n	Q _n
load "1"	↑	l	h	H
load "0"	↑	l	l	L
Hold	↑	h	X	no change
Do nothing	X	H	X	no change

Note:

H = HIGH voltage level;

h = HIGH voltage level one set-up time prior to the HIGH-to-LOW CP transition

L = LOW voltage level;

l = LOW voltage level one set-up time prior to the HIGH-to-LOW CP transition

X = don't care;

↑ = LOW-to-HIGH clock transition.



3、Electrical Parameter

3.1、Absolute Maximum Ratings

($T_{amb}=25^{\circ}\text{C}$, All voltage referenced to V_{ss} , unless otherwise specified)

Parameter	Symbol	Conditions	Min.	Max.	Unit
supply voltage	V_{CC}	-	-0.5	+6.5	V
input voltage	V_I	-	-0.5	+6.5	V
output voltage	V_O	Active mode	-0.5	$V_{CC}+0.5$	V
		Power-down mode; $V_{CC}=0\text{V}$	-0.5	+6.5	V
supply current	I_{CC}	-	-	100	mA
ground current	I_{GND}	-	-100	-	mA
input clamping current	I_{IK}	$V_I < 0\text{V}$	-50	-	mA
output current	I_O	$V_O=0\text{V}$ to V_{CC}	-	± 50	mA
output clamping current	I_{OK}	$V_O > V_{CC}$ or $V_O < 0\text{V}$	-	± 50	mA
storage temperature	T_{stg}	-	-65	+150	$^{\circ}\text{C}$
soldering temperature	T_L	10s	260		$^{\circ}\text{C}$

3.2、Recommended Operating Conditions

Parameter	Symbol	Conditions	Min.	Typ.	Max.	Unit
supply voltage	V_{CC}	-	1.2	-	3.6	V
input voltage	V_I	-	0	-	5.5	V
output voltage	V_O	Active mode	0	-	V_{CC}	V
		Power-down mode; $V_{CC}=0\text{V}$	0	-	5.5	V
ambient temperature	T_{amb}	-	-40	-	+125	$^{\circ}\text{C}$

3.3、Electrical Characteristics

3.3.1、DC Characteristics 1

($T_{amb}=-40^{\circ}\text{C}$ to $+85^{\circ}\text{C}$, voltages are referenced to GND (ground=0V), unless otherwise specified.)

Parameter	Symbol	V_{CC}	Conditions	Min.	Typ.	Max.	Unit
HIGH-level input voltage	V_{IH}	1.2V	-	1.08	-	-	V
		1.65V to 1.95V	-	$0.65 \times V_{CC}$	-	-	V
		2.3V to 2.7V	-	1.7	-	-	V
		2.7V to 3.6V	-	2.0	-	-	V
LOW-level input voltage	V_{IL}	1.2V	-	-	-	0.12	V
		1.65V to 1.95V	-	-	-	$0.35 \times V_{CC}$	V
		2.3V to 2.7V	-	-	-	0.7	V
		2.7V to 3.6V	-	-	-	0.8	V
HIGH-level output voltage	V_{OH}	1.65V to 3.6V	$I_O=-100\mu\text{A}$	$V_{CC}-0.2$	-	-	V
		1.65V	$I_O=-4\text{mA}$	1.2	-	-	V
		2.3V	$I_O=-8\text{mA}$	1.8	-	-	V
		2.7V	$I_O=-12\text{mA}$	2.2	-	-	V
		3.0V	$I_O=-18\text{mA}$	2.4	-	-	V
		3.0V	$I_O=-24\text{mA}$	2.2	-	-	V



LOW-level output voltage	V_{OL}	1.65V to 3.6V	$I_O=100\mu A$	-	-	0.2	V
		1.65V	$I_O=4mA$	-	-	0.45	V
		2.3V	$I_O=8mA$	-	-	0.6	V
		2.7V	$I_O=12mA$	-	-	0.4	V
		3.0V	$I_O=24mA$	-	-	0.55	V
input leakage	I_I	3.6V	$V_I=5.5V$ or GND	-	-	± 5	μA
supply current	I_{CC}	3.6V	$V_I=V_{CC}$ or GND; $I_O=0A$	-	-	10	μA
additional supply current	ΔI_{CC}	2.7V to 3.6V	per input pin; $V_I=V_{CC}-0.6V$;	-	-	500	μA

3.3.2、DC Characteristics 2

($T_{amb}=-40^{\circ}C$ to $+125^{\circ}C$, voltages are referenced to GND (ground=0V), unless otherwise specified.)

Parameter	Symbol	V_{CC}	Conditions	Min.	Typ.	Max.	Unit
HIGH-level input voltage	V_{IH}	1.2V	-	1.08	-	-	V
		1.65V to 1.95V	-	$0.65 \times V_{CC}$	-	-	V
		2.3V to 2.7V	-	1.7	-	-	V
		2.7V to 3.6V	-	2.0	-	-	V
LOW-level input voltage	V_{IL}	1.2V	-	-	-	0.12	V
		1.65V to 1.95V	-	-	-	$0.35 \times V_{CC}$	V
		2.3V to 2.7V	-	-	-	0.7	V
		2.7V to 3.6V	-	-	-	0.8	V
HIGH-level output voltage	V_{OH}	1.65V to 3.6V	$I_O=-100\mu A$	$V_{CC}-0.3$	-	-	V
		1.65V	$I_O=-4mA$	1.05	-	-	V
		2.3V	$I_O=-8mA$	1.65	-	-	V
		2.7V	$I_O=-12mA$	2.05	-	-	V
		3.0V	$I_O=-18mA$	2.25	-	-	V
		3.0V	$I_O=-24mA$	2.0	-	-	V
LOW-level output voltage	V_{OL}	1.65V to 3.6V	$I_O=100\mu A$	-	-	0.3	V
		1.65V	$I_O=4mA$	-	-	0.65	V
		2.3V	$I_O=8mA$	-	-	0.8	V
		2.7V	$I_O=12mA$	-	-	0.6	V
		3.0V	$I_O=24mA$	-	-	0.8	V
input leakage	I_I	3.6V	$V_I=5.5V$ or GND	-	-	± 20	μA
supply current	I_{CC}	3.6V	$V_I=V_{CC}$ or GND; $I_O=0A$	-	-	40	μA
additional supply current	ΔI_{CC}	2.7V to 3.6V	per input pin; $V_I=V_{CC}-0.6V$;	-	-	5000	μA



3.3.3、 AC Characteristics 1

($T_{amb}=-40^{\circ}\text{C}$ to $+85^{\circ}\text{C}$, voltages are referenced to GND (ground=0V), unless otherwise specified.)

Parameter	Symbol	V _{CC}	Conditions	Min.	Typ. ^[1]	Max.	Unit
CP to Qn propagation delay	t _{PLH} , t _{PHL}	1.2V	see Figure 4	-	15.0	-	ns
		1.65V to 1.95V		2.5	7.4	14.5	ns
		2.3V to 2.7V		1.8	4.4	8.5	ns
		2.7V		1.5	4.3	7.9	ns
		3.0V to 3.6V		1.5	4.0	7.6	ns
Clock High or Low pulse width	t _w	1.65V to 1.95V	see Figure 4	6.0	-	-	ns
		2.3V to 2.7V		5.0	-	-	ns
		2.7V		5.0	1.6	-	ns
		3.0V to 3.6V		4.0	1.0	-	ns
\bar{E} to LE set-up time	t _{su}	1.65V to 1.95V	see Figure 5	5.5	-	-	ns
		2.3V to 2.7V		4.5	-	-	ns
		2.7V		4.0	0.6	-	ns
		3.0V to 3.6V		3.0	0.2	-	ns
Dn to CP set-up time		1.65V to 1.95V		5.5	-	-	ns
		2.3V to 2.7V		4.5	-	-	ns
		2.7V		3.0	1.0	-	ns
		3.0V to 3.6V		2.0	0.7	-	ns
Dn to LE hold time	t _h	1.65V to 1.95V	see Figure 5	1.5	-	-	ns
		2.3V to 2.7V		0.5	-	-	ns
		2.7V		0.0	-1.0	-	ns
		3.0V to 3.6V		1.0	0	-	ns
Dn to CP set-up time		1.65V to 1.95V		1.5	-	-	ns
		2.3V to 2.7V		0.5	-	-	ns
		2.7V		0.0	-1.1	-	ns
		3.0V to 3.6V		0.0	-1.0	-	ns

Note:

[1] Typical values are measured at $T_{amb}=25^{\circ}\text{C}$ and $V_{CC}=1.2\text{V}$, 1.8V , 2.5V , 2.7V , and 3.3V respectively.



3.3.4、AC Characteristics 2

($T_{amb}=-40^{\circ}\text{C}$ to $+125^{\circ}\text{C}$, voltages are referenced to GND (ground=0V), unless otherwise specified.)

Parameter	Symbol	V _{CC}	Conditions	Min.	Typ. ^[1]	Max.	Unit
CP to Qn propagation delay	t_{PLH}, t_{PHL}	1.65V to 1.95V	see Figure 4	2.5	-	15.5	ns
		2.3V to 2.7V		1.8	-	9.1	ns
		2.7V		1.5	-	10.0	ns
		3.0V to 3.6V		1.5	-	9.5	ns
Clock High or Low pulse width	t_w	1.65V to 1.95V	see Figure 4	6.0	-	-	ns
		2.3V to 2.7V		5.0	-	-	ns
		2.7V		5.0	-	-	ns
		3.0V to 3.6V		4.0	-	-	ns
\bar{E} to CP set-up time	t_{su}	1.65V to 1.95V	see Figure 5	5.5	-	-	ns
		2.3V to 2.7V		4.5	-	-	ns
		2.7V		4.0	-	-	ns
		3.0V to 3.6V		3.0	-	-	ns
Dn to CP set-up time	t_{su}	1.65V to 1.95V	see Figure 5	5.5	-	-	ns
		2.3V to 2.7V		4.5	-	-	ns
		2.7V		3.0	-	-	ns
		3.0V to 3.6V		2.0	-	-	ns
Dn to LE hold time	t_h	1.65V to 1.95V	see Figure 5	1.5	-	-	ns
		2.3V to 2.7V		0.5	-	-	ns
		2.7V		0.0	-	-	ns
		3.0V to 3.6V		1.0	-	-	ns
Dn to CP set-up time	t_{su}	1.65V to 1.95V	see Figure 5	1.5	-	-	ns
		2.3V to 2.7V		0.5	-	-	ns
		2.7V		0.0	-	-	ns
		3.0V to 3.6V		0.0	-	-	ns



4、Testing Circuit

4.1、AC Testing Circuit

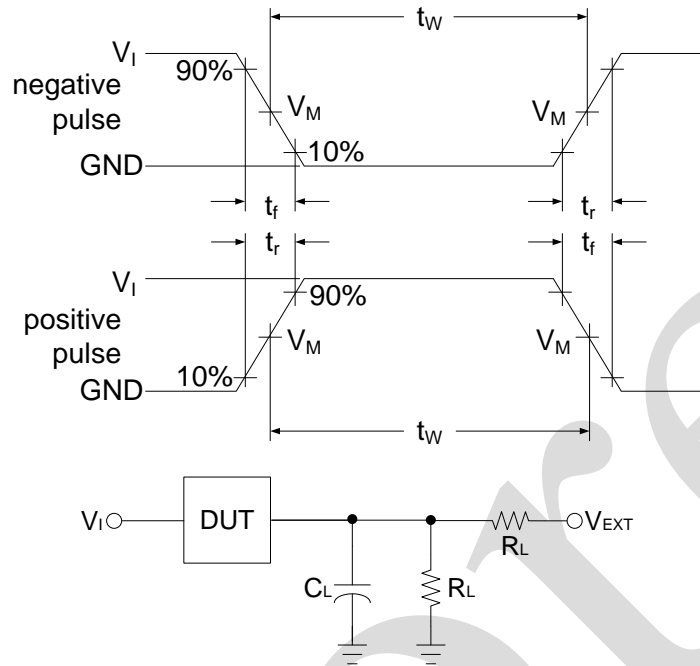


Figure 3. Test circuit for measuring switching times

Definitions for test circuit:

R_L =Load resistance.

C_L =Load capacitance including jig and probe capacitance.

4.2、Test Data

Supply voltage	Input		Load		V_{EXT}		
	V_I	t_r, t_f	C_L	R_L	t_{PLH}, t_{PHL}	t_{PLZ}, t_{PZL}	t_{PHZ}, t_{PZH}
1.2V	V_{CC}	$\leq 3ns$	30pF	1k Ω	open	$2 \times V_{CC}$	GND
1.65V to 1.95V	V_{CC}	$\leq 3ns$	30pF	1k Ω	open	$2 \times V_{CC}$	GND
2.3V to 2.7V	V_{CC}	$\leq 3ns$	30pF	500 Ω	open	$2 \times V_{CC}$	GND
2.7V	V_{CC}	$\leq 3ns$	50pF	500 Ω	open	$2 \times V_{CC}$	GND
3.0V to 3.6V	V_{CC}	$\leq 3ns$	50pF	500 Ω	open	$2 \times V_{CC}$	GND



4.3、AC Testing Waveforms

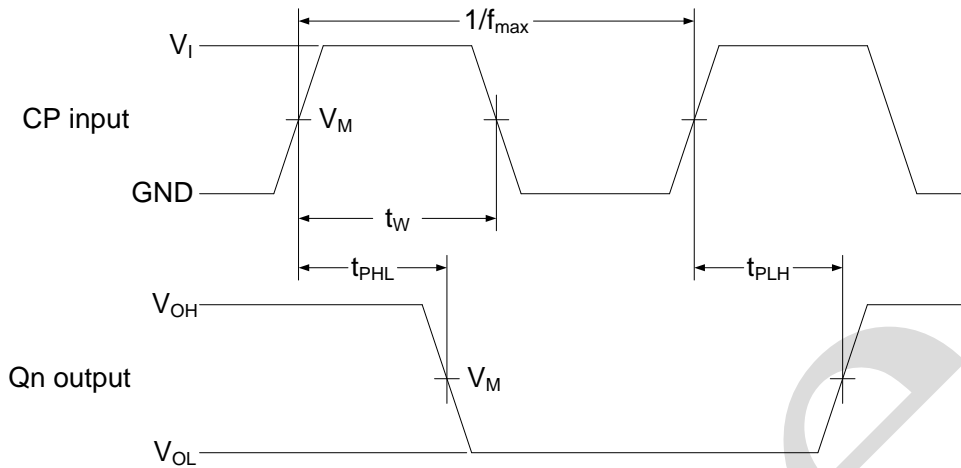


Figure 4. Propagation delay clock (CP) to output (Qn), pulse width clock (CP), and maximum frequency

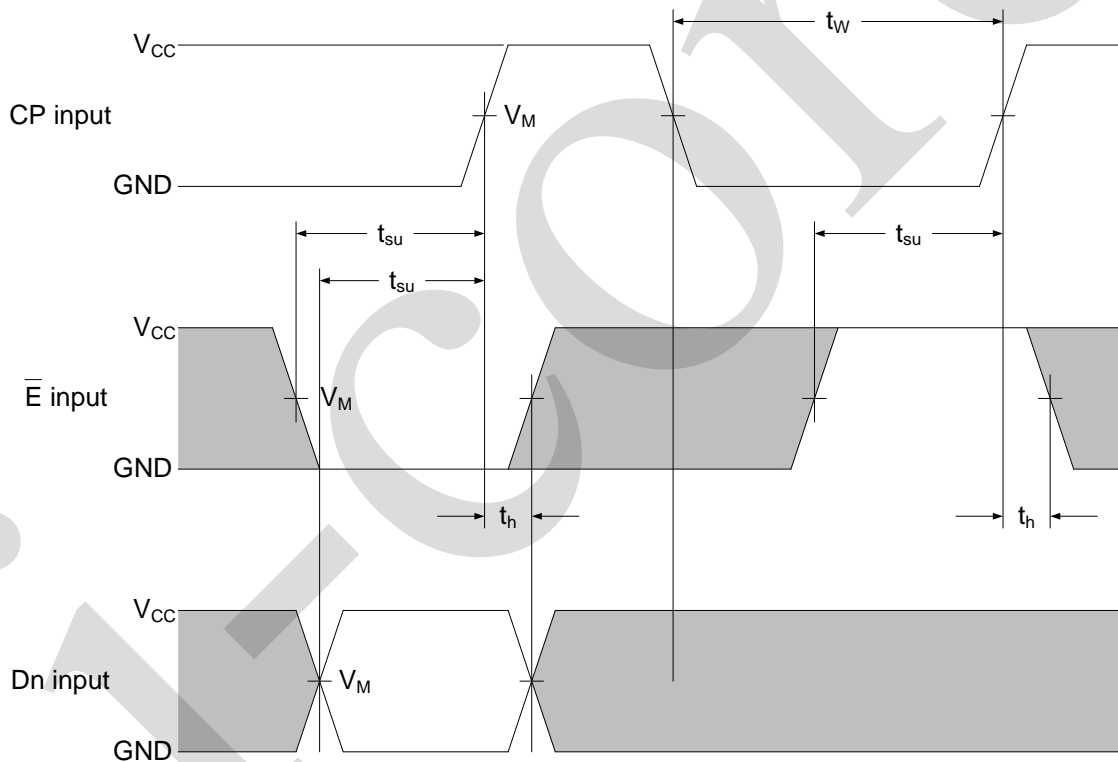


Figure 5. Data set-up and hold times of data input (Dn) and enable input (\bar{E}) and pulse width of enable input (\bar{E})



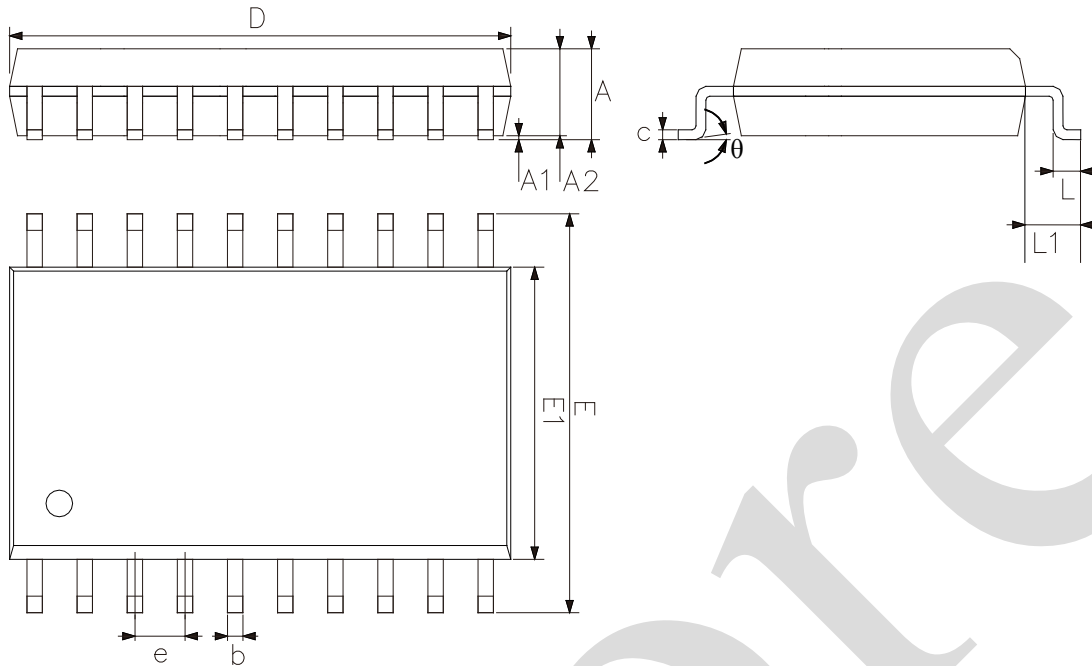
4.4. Measurement Points

Supply voltage	Input	Output
V_{CC}	V_M	V_M
1.2V	$0.5 \times V_{CC}$	$0.5 \times V_{CC}$
1.65V to 1.95V	$0.5 \times V_{CC}$	$0.5 \times V_{CC}$
2.3V to 2.7V	$0.5 \times V_{CC}$	$0.5 \times V_{CC}$
2.7V	$0.5 \times V_{CC}$	$0.5 \times V_{CC}$
3.0V to 3.6V	$0.5 \times V_{CC}$	$0.5 \times V_{CC}$



5、Package Information

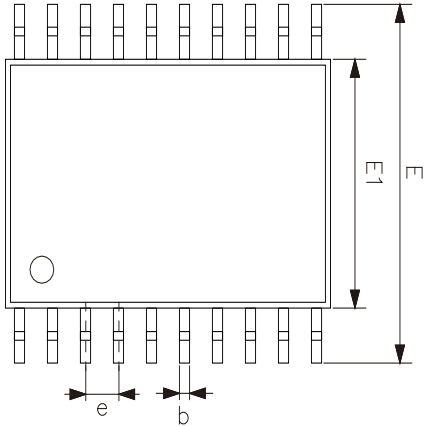
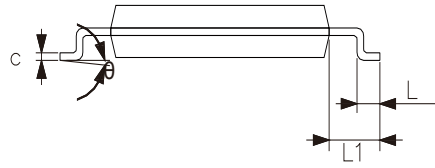
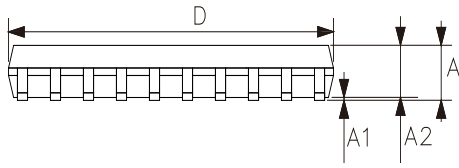
5.1、SOP20



2023/12/A	Dimensions In Millimeters		
	Symbol	Min.	Max.
	A	2.47	2.65
	A1	0.05	0.30
	A2	2.20	2.44
	b	0.35	0.50
	c	0.15	0.30
	D	12.54	12.94
	E	10.00	10.60
	E1	7.30	7.70
	e	1.27	
	L	0.40	1.05
	L1	1.30	1.50
	θ	0°	8°



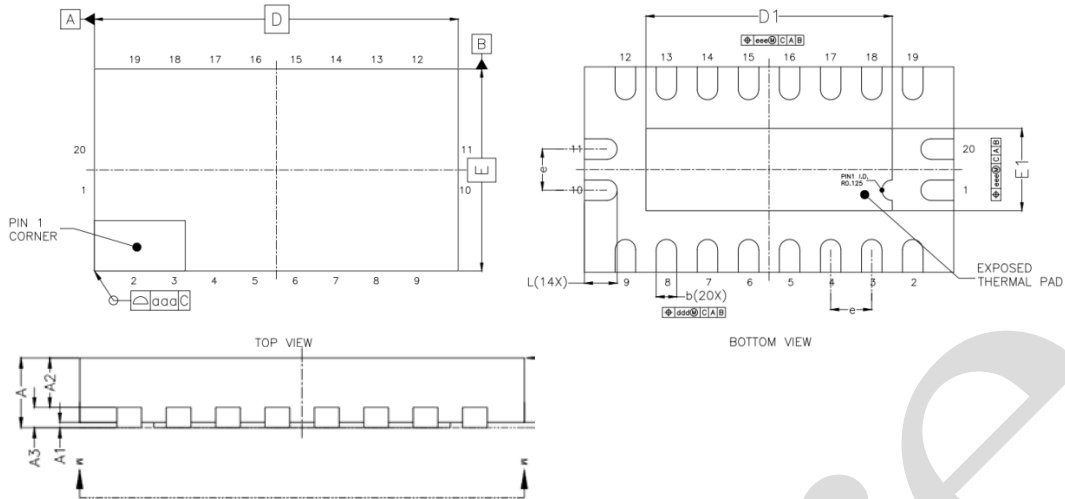
5.2、TSSOP20



2023/12/A	Dimensions In Millimeters	
Symbol	Min	Max
A	—	1.20
A1	0.05	0.15
A2	0.80	1.05
b	0.19	0.30
c	0.09	0.20
D	6.40	6.60
E1	4.30	4.50
E	6.20	6.60
e	0.65	
L	0.45	0.75
L1	1.00	
θ	0°	8°



5.3、DHVQFN20



2023/12/A Symbol	Dimensions In Millimeters	
	Min	Max
A	0.80	1.00
A1	0.00	0.05
A2	0.60	0.70
A3	0.20	
D	4.40	4.60
E	2.40	2.60
e	0.50	
b	0.18	0.30
L	0.30	0.50
D1	2.70	3.15
E1	0.70	1.15



6、 Statements And Notes

6.1、 The name and content of Hazardous substances or Elements in the product

Part name	Hazardous substances or Elements									
	Lead and lead compounds	Mercury and mercury compounds	Cadmium and cadmium compounds	Hexavalent chromium compounds	Polybrominated biphenyls	Polybrominated biphenyl ethers	Dibutyl phthalate	Butylbenzyl phthalate	Di-2-ethylhexyl phthalate	Diisobutyl phthalate
Lead frame	○	○	○	○	○	○	○	○	○	○
Plastic resin	○	○	○	○	○	○	○	○	○	○
Chip	○	○	○	○	○	○	○	○	○	○
The lead	○	○	○	○	○	○	○	○	○	○
Plastic sheet installed	○	○	○	○	○	○	○	○	○	○
explanation	○: Indicates that the content of hazardous substances or elements in the detection limit of the following the SJ/T11363-2006 standard. ×: Indicates that the content of hazardous substances or elements exceeding the SJ/T11363-2006 Standard limit requirements.									

6.2、 Notes

We recommend you to read this chapter carefully before using this product.

The information in this chapter is provided for reference only and i-Core disclaims any express or implied warranties, including but not limited to applicability, special application or non-infringement of third party rights.

This product is not suitable for critical equipment such as life-saving, life-sustaining or safety equipment. It is also not suitable for applications that may result in personal injury, death, or serious property or environmental damage due to product malfunction or failure. I-Core will not be liable for any damages incurred by the customers at their own risk for such applications.

The customer is responsible for conducting all necessary tests i-Core's application to avoid failure in the application or the application of the customer's third party users. I-Core does not accept any liability.

The Company reserves the right to change or improve the information published in this chapter at any time. The information in this chapter are subject to change without notice. We recommend the customer to consult our sales staff before purchasing.

Please obtain related materials form i-Core's regular channels and we are not responsible for its content if it is provided by sources other than our company.

In case of any conflict between the Chinese and English version, the version is subject to the Chinese one.